

# SWANBOURNE ART TRAIL - BUCKS ART WEEKS

## 6<sup>TH</sup> - 14<sup>TH</sup> JUNE 2026

Each venue is open daily from 10am to 4pm. Free to visit.



1

Brises Farmhouse  
41 Nearton End  
MK17 0SL

Park in the farmyard next door as signposted or at The Betsey Wynne (10 min walk).



2

Swanbourne Village Hall  
Mursley Road  
MK17 0SH

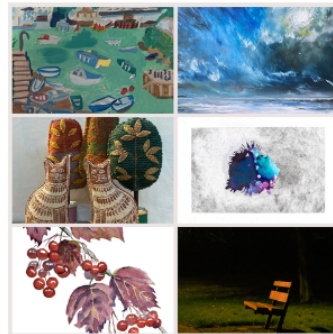
Park on Mursley Road or at The Betsey Wynne.



3

St Swithun's Church  
Mursley Road  
MK17 0SW

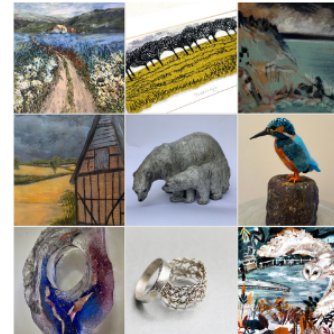
Park outside or at The Betsey Wynne.



4

Brises Farm Barn  
Nearton End  
MK17 0SL

Park in the farmyard as signposted or at The Betsey Wynne (10 mins walk).



## Swanbourne Village Scarecrow Trail

### 6<sup>TH</sup> - 14<sup>TH</sup> June

Alongside the Swanbourne Art Trail is a Scarecrow Trail around the village.  
Vote for your favourite at the Swanbourne Village Store.  
See how many scarecrows you can spot around the village!

SWANBOURNE VILLAGE MUSIC FESTIVAL

SATURDAY 13<sup>TH</sup> JUNE  
2PM - 10PM

ADJACENT TO SWANBOURNE HOUSE SCHOOL  
FOOD & DRINK AVAILABLE

PLUS SWANBOURNE ART & SCARECROW TRAILS 2026 ON FROM 6<sup>TH</sup> TO 14<sup>TH</sup> JUNE

The Swanbourne Art Trail & Scarecrow Trail have been organised by Obsidian Art  
For more details see [www.obsidianart.co.uk](http://www.obsidianart.co.uk)  
or scan below :

