

# BUCKS ART WEEKS VENUE LOCATIONS

**ART**  
At St **DUNSTANS**

**6-14 JUNE 2026**  
SATS & W/DAYS 10-4  
SUNDAYS 12-4

Helen White illuminations  
and ceramics  
Chris Inder porcelain  
Kate Wilkinson Jewellery

Christine Bass painting  
Graham Lester paper sculpture  
and turned art  
Deborah Brett mosaics

Denise Purdy printmaking  
Susan Day porcelain  
Rachel Wright embroidered textiles

## MONKS RISBOROUGH

A R T T R A I L

ART AT ST DUNSTAN'S 203-211  
PARKING IN MILL LANE

TO LONGWICK

ORCHARD  
VIEW ARTS  
197-202  
LITTLE MEADLE

ANGIE THIRKELL  
216  
SPEEN

BOB WILLIAMS  
212

HAZEL WILLIAMS 213

LIVVY KING  
214

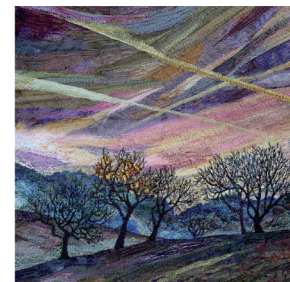
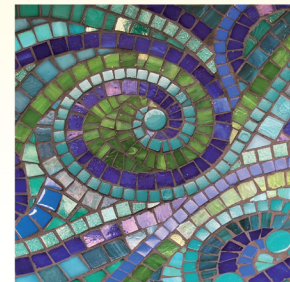
SUE MILLS 215

## PRINCES RISBOROUGH

A R T T R A I L



Chiltern Railways connects Aylesbury and Princes Risborough, stopping at Monks Risborough. Buses run from Aylesbury to High Wycombe on the A4010.



HOME-BAKED CAKES & DRINKS  
THROUGHOUT THE SHOW.  
CREAM TEAS WEEKEND AFTERNOONS.  
ST DUNSTAN'S CHURCH, OFF MILL LANE,  
MONKS RISBOROUGH, HP27 9JE.  
FREE PARKING IN MILL LANE.

[www.artatstdunstans.blogspot.com](http://www.artatstdunstans.blogspot.com)

**BUCKS  
ART  
WEEKS**  
Makers & Artists in Action

SEE INSIDE FOR OTHER VENUES IN THE RISBOROUGH AREA ▶