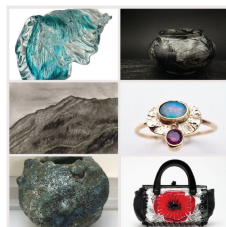


1

**St Mary's Church**  
St Mary's Square  
Aylesbury  
HP20 2JJ

**Weekdays:**  
10am – 3pm  
**Saturdays:**  
10am – 3pm  
**Sundays:**  
12noon – 3pm

**Thursday 18th:**  
2pm-4pm

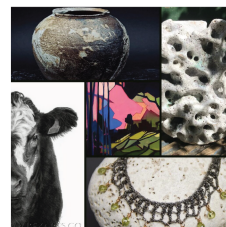


2

**Discover Bucks**  
Church Street  
Aylesbury  
HP20 2QP

**Weekdays:**  
10am – 3pm  
**Saturdays:**  
10am – 4pm  
**Sundays:**  
12noon – 4pm

**Closed: Mon + Tue**



3

**Aylesbury Library**  
Walton Street  
Aylesbury  
HP20 1UU

**Weekdays:**  
9am – 7pm  
**Saturdays:**  
10am – 5pm

**Mondays:**  
Early closing 5pm  
**Sundays:**  
Closed

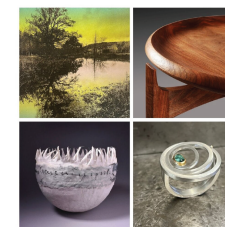


4

**The Bungalow**  
29 Stoke Road  
Aylesbury  
HP21 7TE

**Weekdays:**  
11am – 6pm  
**Saturdays:**  
11am – 6pm  
**Sundays:**  
11am – 6pm

**Thursday 18th:**  
open until 8pm



5

**Queens Park Arts Centre**  
Queens Park  
Aylesbury  
HP21 7RT

**Weekdays:**  
10am – 9.30pm  
**Saturdays:**  
10am – 4pm  
**Sundays:**  
Closed

**Fridays:**  
10am-4.30pm  
**Sat 20th**  
10am-12.30pm

1 2 3 5 - 10 min walk from town centre car parks

4 5 On-site parking

Aylesbury Library and Queens Park Arts Centre will be open from the 6th June

The Aylesbury Art Trail is Organised by Obsidian Art. Find out more by visiting the QR code

**AYLESBURY ART TRAIL** Bucks Art Weeks 13th – 21st June 2026

