

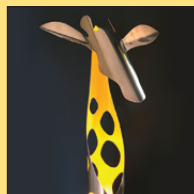
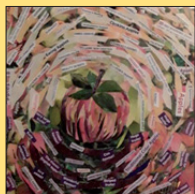
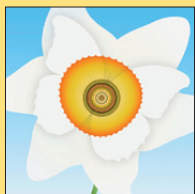
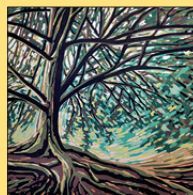
# Buckingham & Winslow area

## Art Trail

10th - 25th June 2023

Featuring 39 artists and 10 venues

BUCKS  
**ART**  
WEEKS  
Makers & Artists in Action



[www.bucksartweeks.org.uk](http://www.bucksartweeks.org.uk)

## 15 Brian Eldridge - 1 artist

### Acrylic painted art, upcycling materials & celebrating art past

**Venue:** Pine Lodge, 6 Hillesden Way, Page Hill, Buckingham MK18 1UE  
Parking outside the close

**Days open:** Tues to Thurs and weekends, closed Mon & Fri

**Opening times:** Tues – Thurs 11.00am – 4.00pm,  
Sat 10.00am – 4.00pm, Sun 11.00am – 4.00pm



## 16 Art at Gawcott Church - 11 artists

### Group exhibition in village church

**Artists:** Mike Bloor, Sam Burke, Alan Chown, Rowena Devas, Sara Hack, Lesley Marshall, Kim McMahon, Malcolm Riley, Nicola Smith, Jill Varone, John Whitehead

**Venue:** Holy Trinity Church, Church St, Gawcott, MK18 4HY

**Days open:** Every day,

**Meet the Artists Day:** Sat 10th

**Opening times:** Mon – Fri 10.30am – 4.30pm, Sat 10.00am – 5.30pm,  
Sun 12.00 – 5.30pm Early closing Sun 25th 4.00pm



## 17 Tlws Johnson - 1 artist

### Kiln formed glass

**Venue:** The Old Stores Workshop, Main St, Gawcott, MK18 4HZ

**Days open:** Every day *except* Mondays

**Opening times:** 10.30am – 5.00pm



## 18 Clare Tebboth - 1 artist

### Watercolour, mixed media and acrylic paintings inspired by wildflowers, birds and hedgerows

**Venue:** Preston Bissett Nurseries and Country Shop, Bushey Lane, Preston Bissett, MK18 4ND

**Days open:** Every day

**Meet the Artist Days:** 10th, 11th 10.30 - 3.0pm,  
16th, 17th, & 18th 10.30am - 2.00pm

**Opening times:** 9.00am – 5.00pm also the Tipi café at nursery

**Watercolour workshop:** Mon 19th [www.claretebboth.com](http://www.claretebboth.com)



## 31 Winslow Group - 9 artists

### Many local artists working across a large variety of disciplines, lots to see.

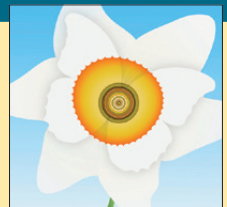
**Artists:** Ros Castling, Adrian Hobbs, Brian Kichenside, Bob King, Graham Lester, Caroline Newland-Smith, Diana Sheldon, and work of Paul Millichip and Shirley Bradford

**Venue:** Council Rooms, 28 High Street, Winslow, MK18 3HF

**Days open:** Every day

**Opening times:** 11.00am – 5.30pm weekends, 1.00pm – 5.30pm weekdays.

**Private views** can be arranged for any time outside these hours. Call to arrange on 07976 796675



## 19 Art in the Chapel - 3 artists

### Mixed media, painting, textiles

**Artists:** Pip Hitchen, Sylvia Patchett, Jane Rennie

**Venue:** The Old Chapel, Main Street, Padbury, MK18 2AY

**Days open:** Thursdays to Sundays

**Meet the Artists Day:** Fri 9th 6.00pm – 8.00pm

**Opening times:** Thurs 12.00am – 4.00pm, Fri 12.00pm – 6.00pm

Sat: 11.00 – 5.00pm, Sun 11.00am – 4.00pm



## 20 Jill Blakey - 1 artist

### Bright and colourful abstract art

**Venue:** working studio at 8 Boundary Road, Padbury, MK18 2GT

**Days open:** 9th – 11th, 16th – 18th **Opening times:** 11.00am – 4.00pm

**Private views** can be arranged, email [jill@jillblakeyart.co.uk](mailto:jill@jillblakeyart.co.uk)



## 21-29 Artists at Orchard Barn - 9 artists

### Established artists exhibiting across a wide range of disciplines – painting, charcoal drawing, print-making, sculpture, ceramics and textiles.

**Artists:** Kathryn Acton (21), Paul Acton (22), Hilary Audus (23), Alexandra Buckle (24), Becky Gouverneur (25), Liz Linton (26), Caroline Moore (27), Cathy Read (28), Kate Whiting (29)

**Venue:** The Orchard Barn, Adstock Community Orchard, Adstock, MK18 2JE

**Days Open:** 10th – 22nd

**Meet the Artists Day:** Sun 11th

**Opening times:** 11.00am – 5.00pm *Early closing* Thurs 22nd 3.00pm

**A donation on every sale will be made to Afghan Aid**



## 34 Peter Keegan Studio - 1 artist

### Award-winning oil portraits, still-lives and landscapes

**Venue:** Working studio at Botolph Claydon Village Hall, Botyl Road, Botolph Claydon, MK18 2LR

**Days open:** 10th – 16th and 19th – 20th

**Opening times:** 11.00am – 5.00pm

**Portrait sitting:** spaces available contact: [peterkeegan@yahoo.co.uk](mailto:peterkeegan@yahoo.co.uk)



## 35-36 The Botolph Artists - 2 artists

### Collagraph printing & mixed media

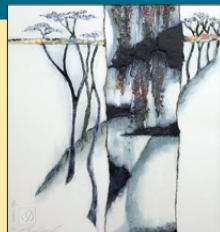
**Artists:** Kim Major-George (35), Helen Savin (36)

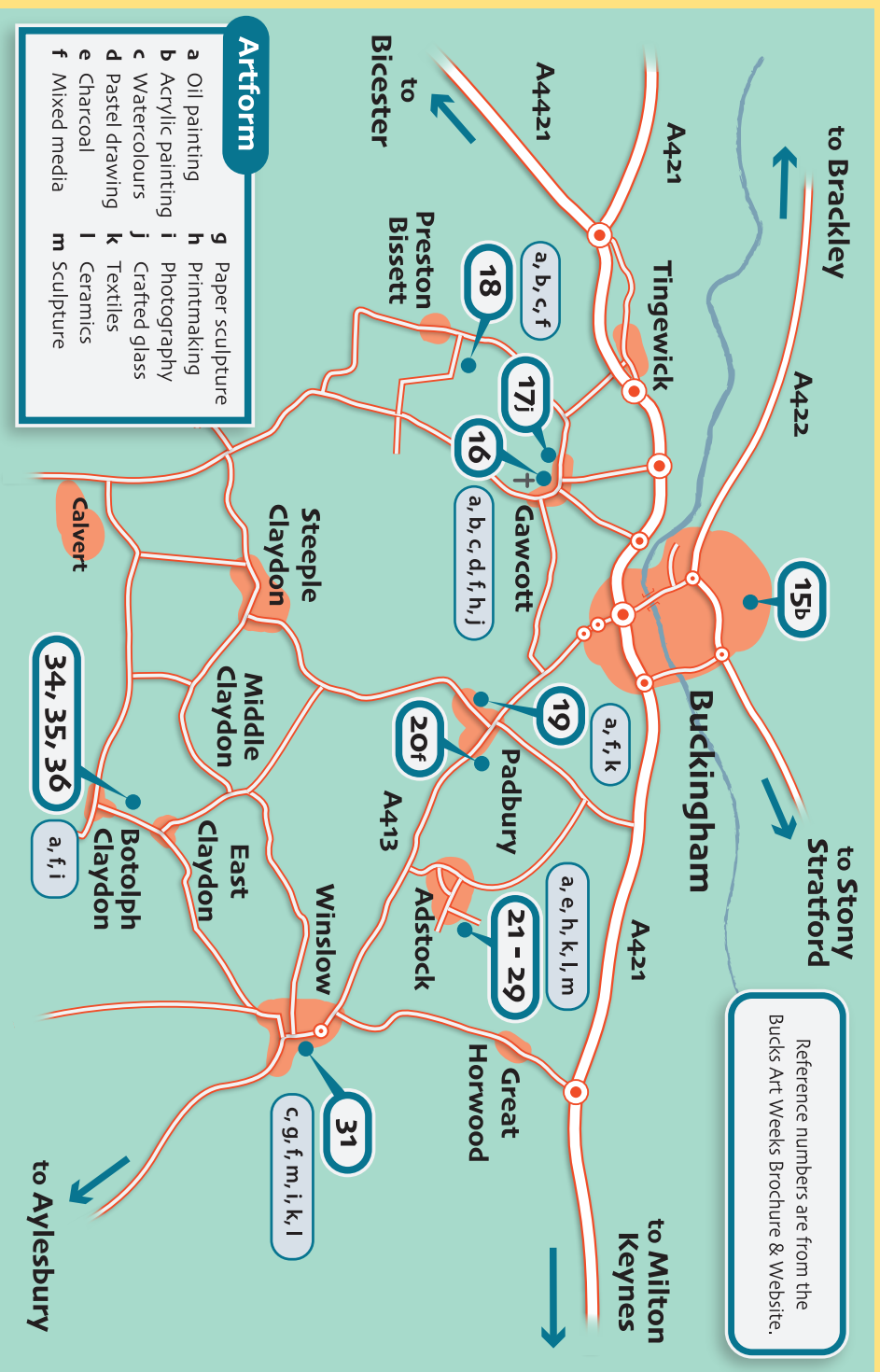
**Venue:** Botolph Claydon Village Hall, Botyl Road, Botolph Claydon, MK18 2LR

**Days Open:** 10th – 16th

**Opening times:** 10.30am – 5.00pm, *Early closing* Fri 16th 4.00pm

**Pop-up café:** Saturday & Sunday each weekend.





**Artist, facilities & parking information see:** <https://www.bucksartweeks.org.uk>

Please check for road closures & diversions due to EWR & HS2 works. Please wear a mask if asked to do so. Hand-gel available!

Flyer artwork produced by Sara Hack [www.black-cat-art.com](http://www.black-cat-art.com)